

## ATTACHMENT PHOTOGRAPHS OF EUT

Photo 1



Photo 2





Photo 3



Photo 4



Photo 5

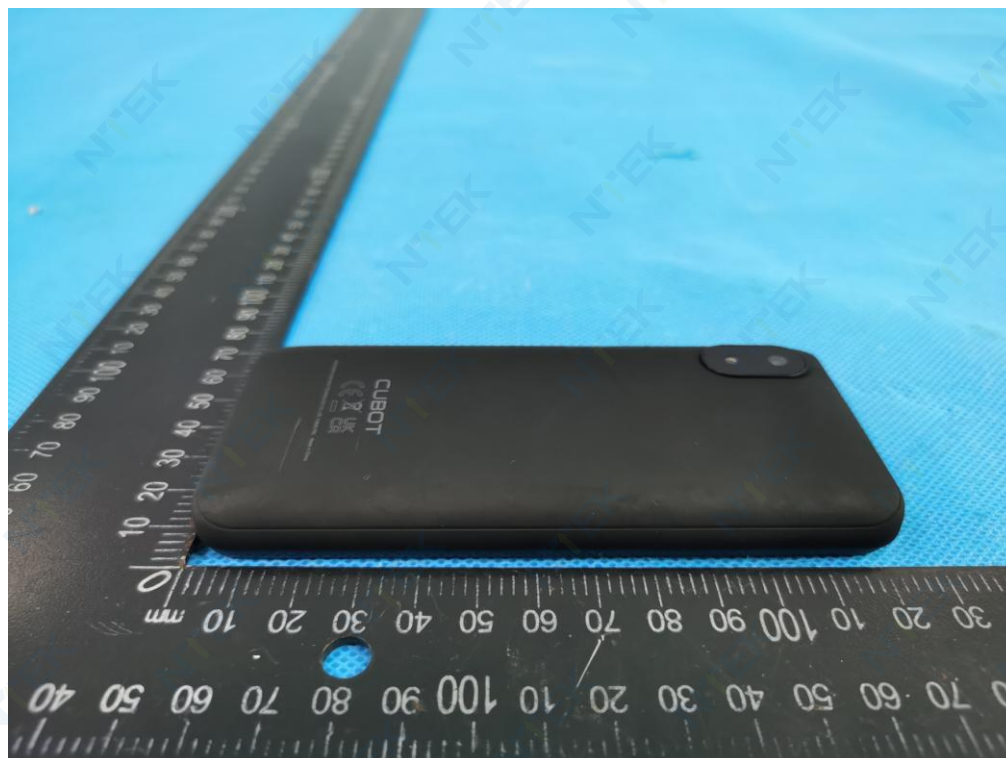


Photo 6





A black Cubot X8 Pro smartphone is shown lying horizontally on a blue textured surface. A black ruler is placed vertically next to the phone, with the 0 cm mark aligned with the top edge of the device. The phone's back features a dual-camera module in the top-left corner and the 'CUBOT X8 PRO' branding in the top-right corner. The ruler shows the phone is approximately 15 cm long.

The photograph displays three mobile phone components against a blue textured background, with a black ruler providing scale. At the top is a plain black plastic back cover with a circular camera cutout. Below it is the phone's main chassis, which has been opened to show internal parts: a silver SIM card slot, various electronic components, and a large white battery label with technical specifications and safety warnings. To the left of the chassis is a separate black battery pack labeled 'C21' with CE and RoHS certification marks. A ruler at the bottom shows measurements from 0 to 100 cm, while a vertical ruler on the left shows measurements from 0 to 100 cm.

Photo 9



Photo 10

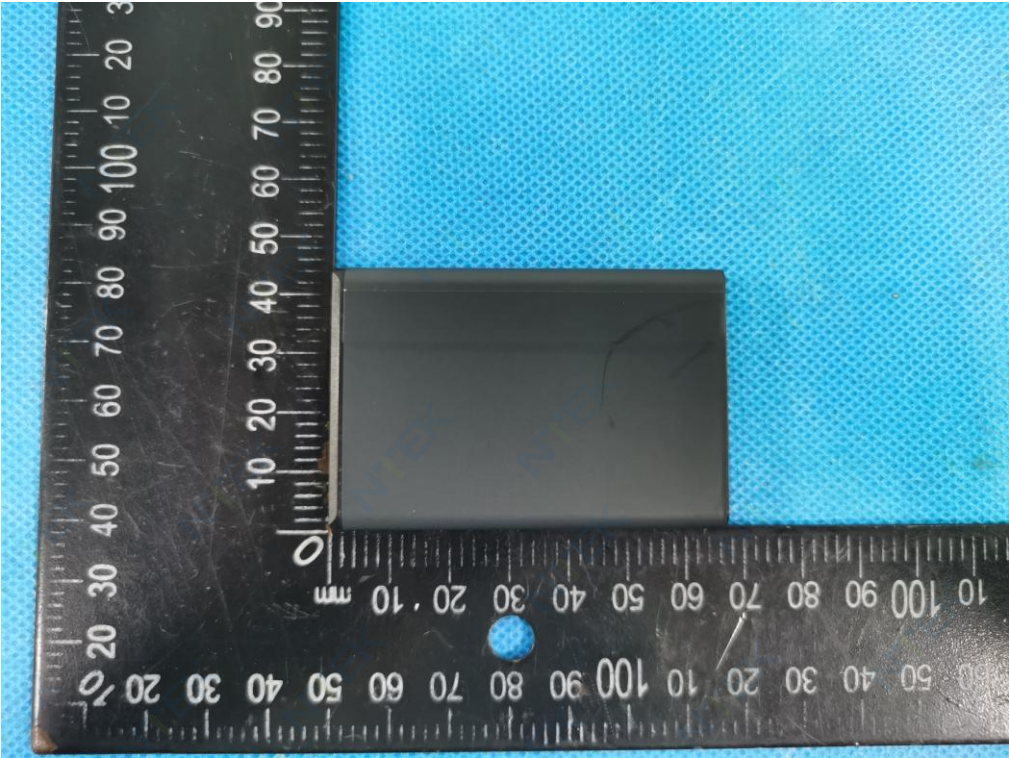




Photo 11



Photo 12

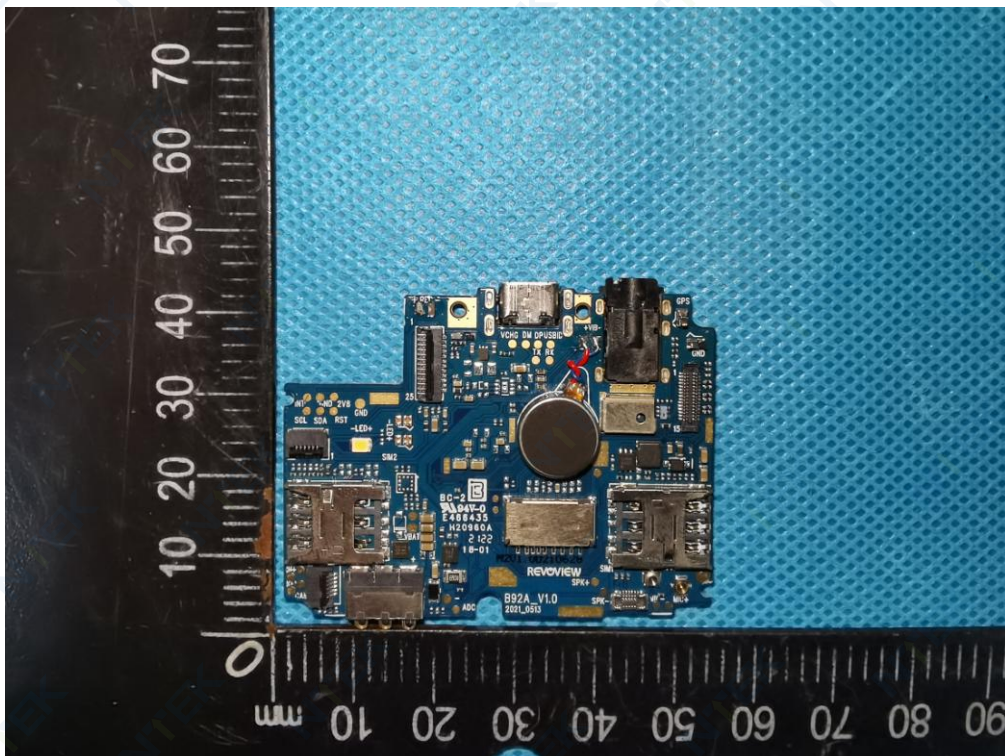




Photo 13

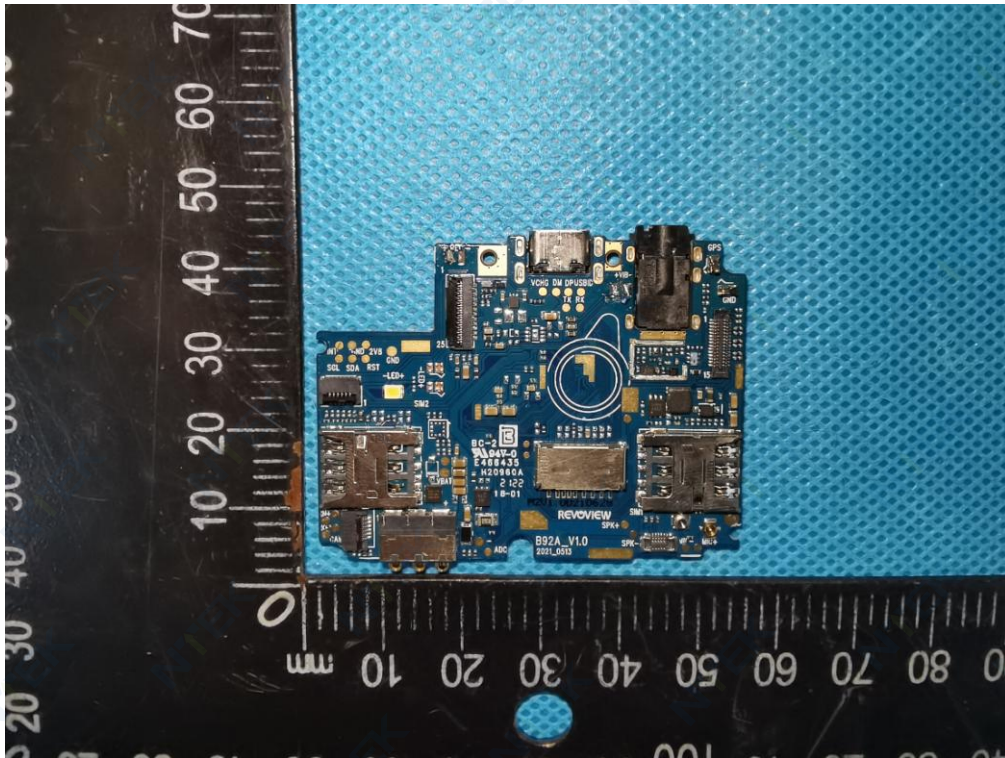


Photo 14

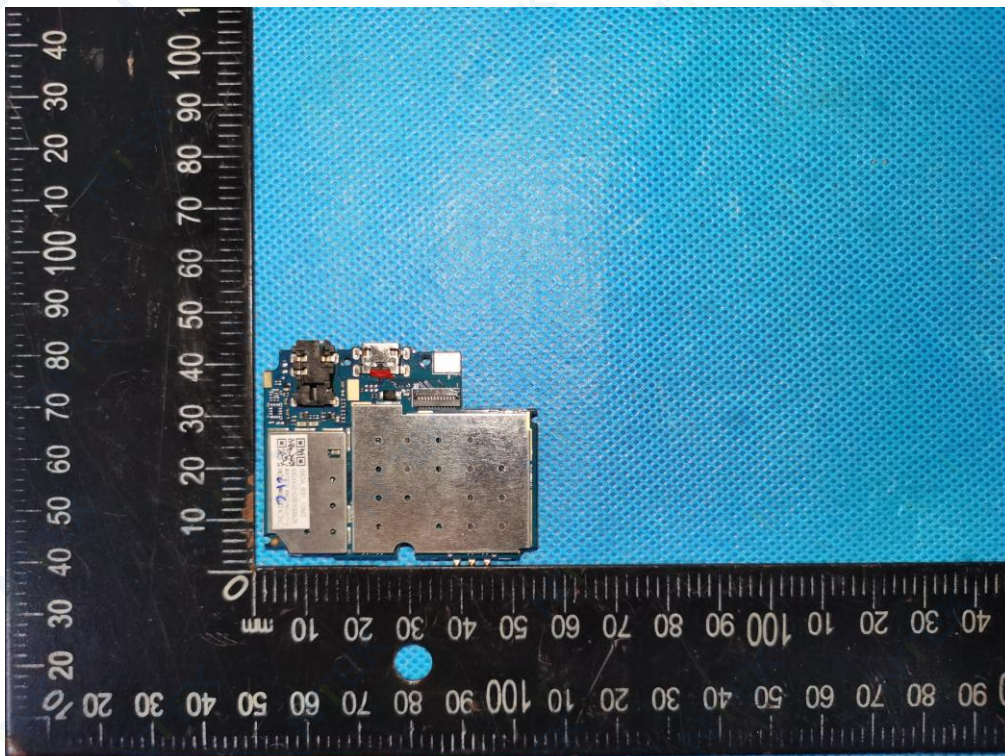




Photo 15

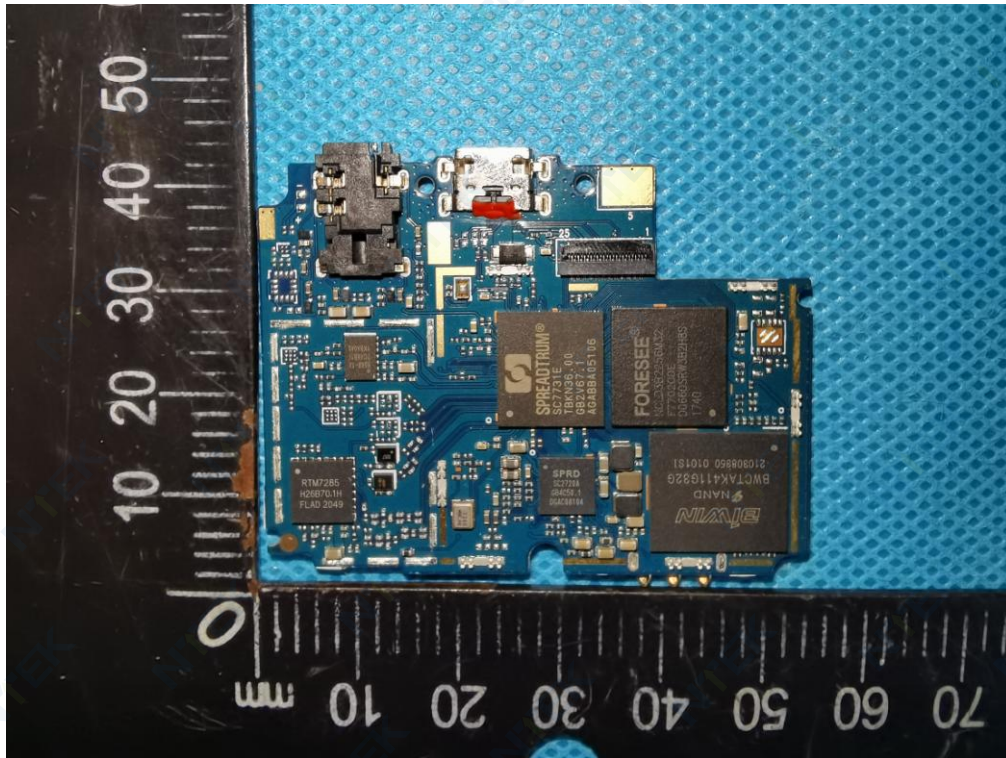


Photo 16

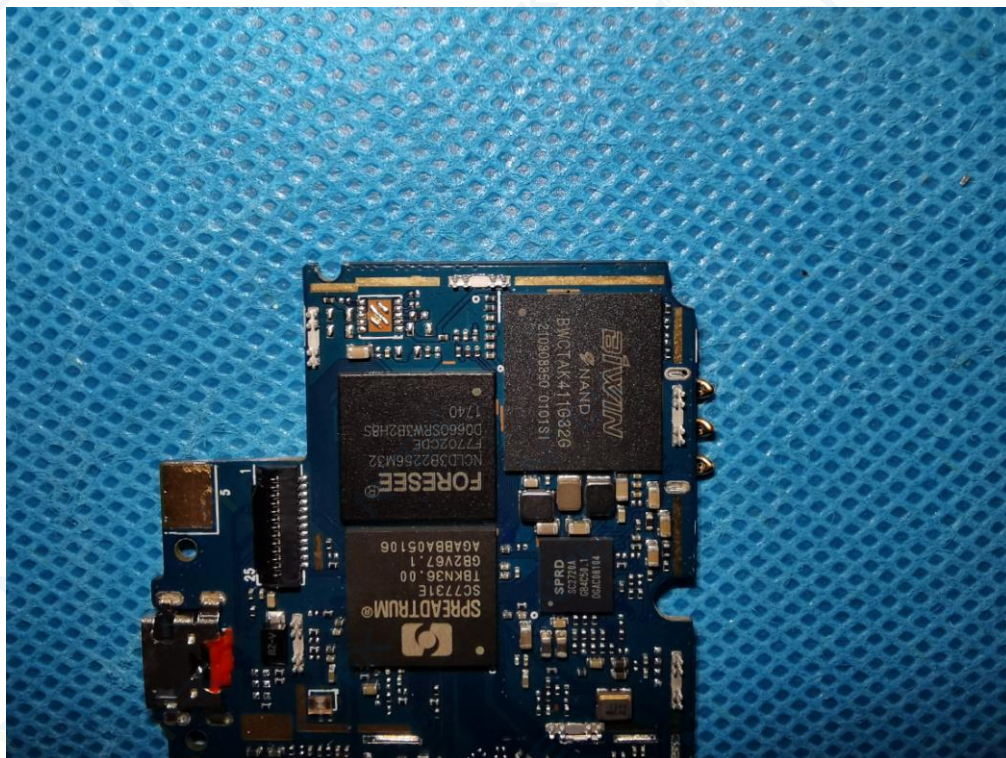




Photo 17

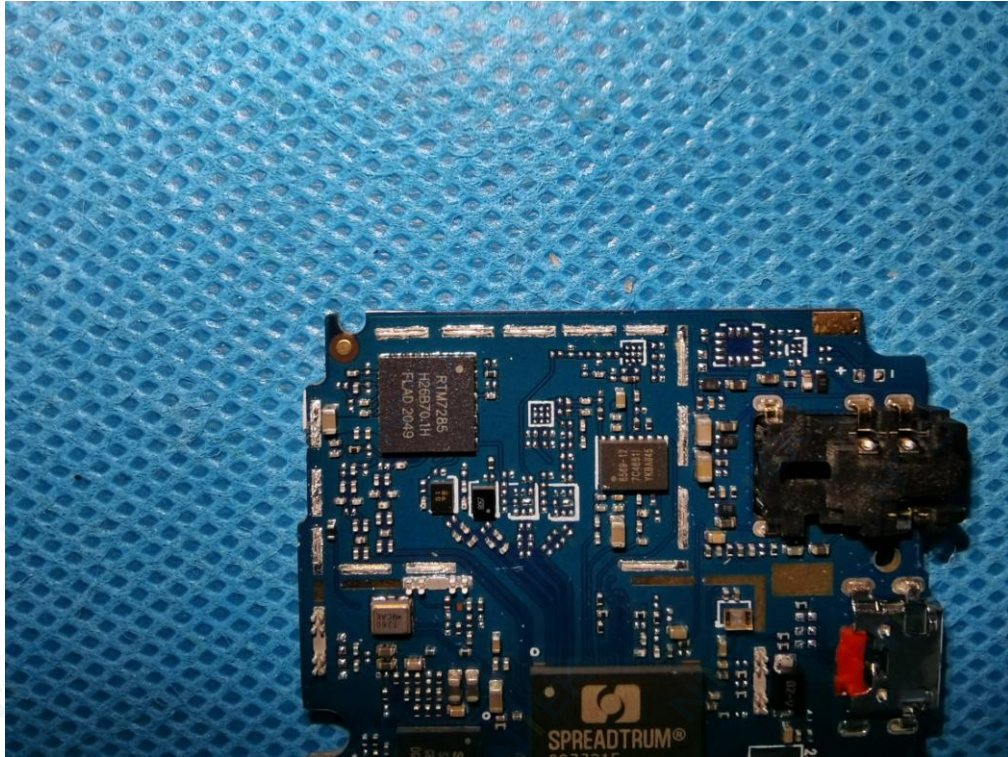


Photo 18

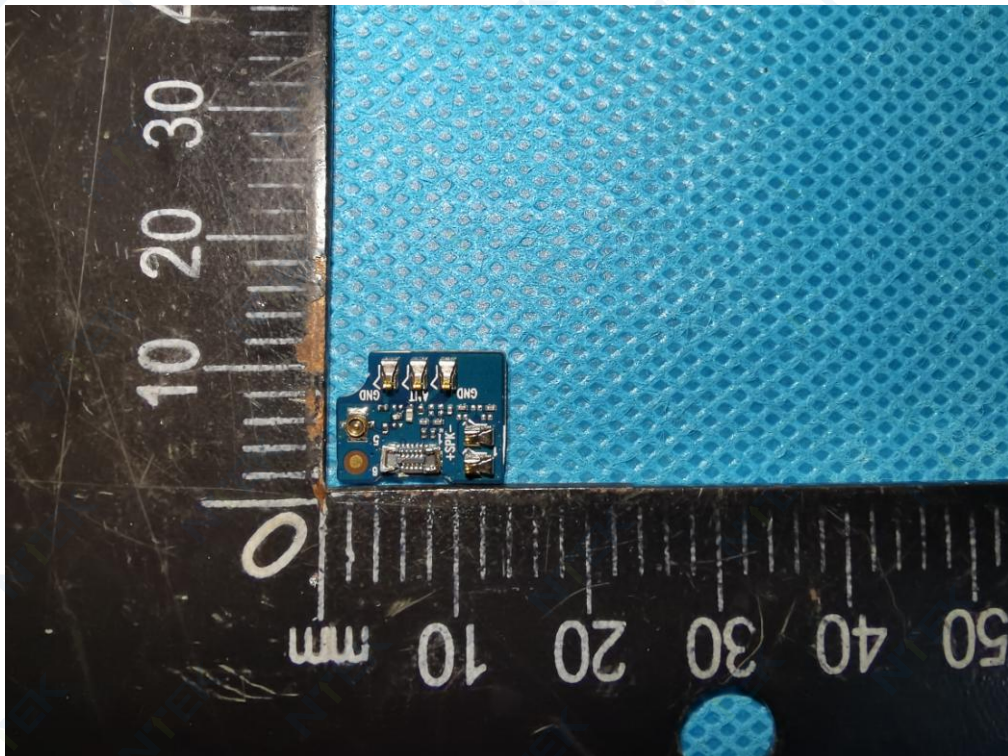




Photo 19

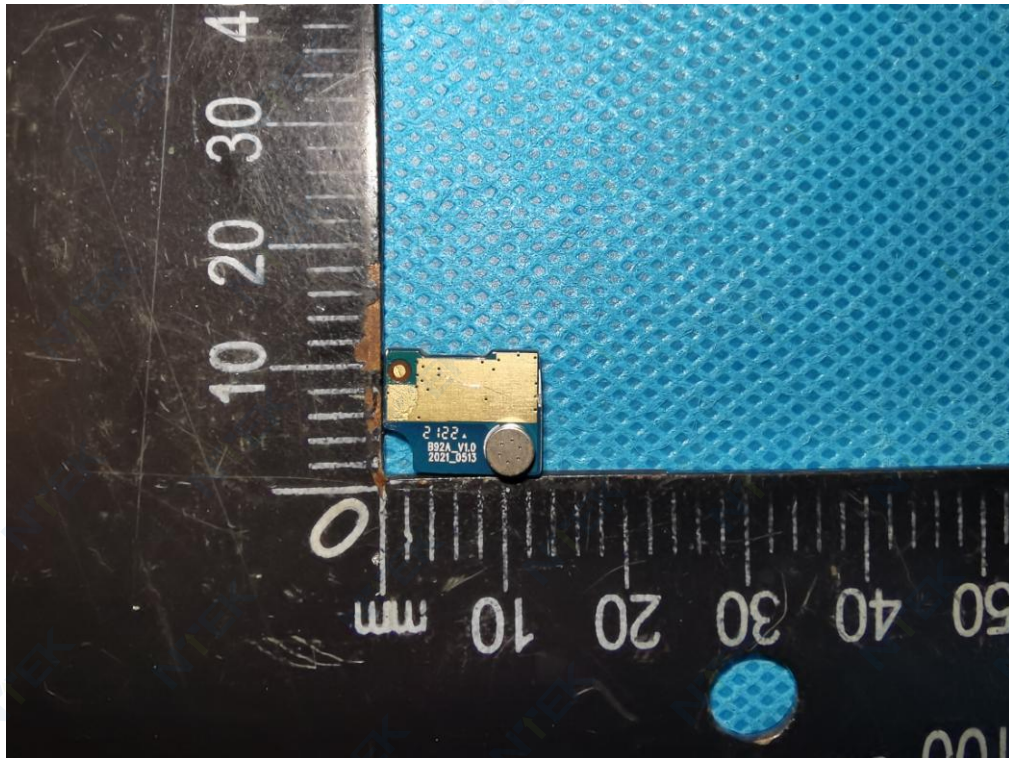


Photo 20

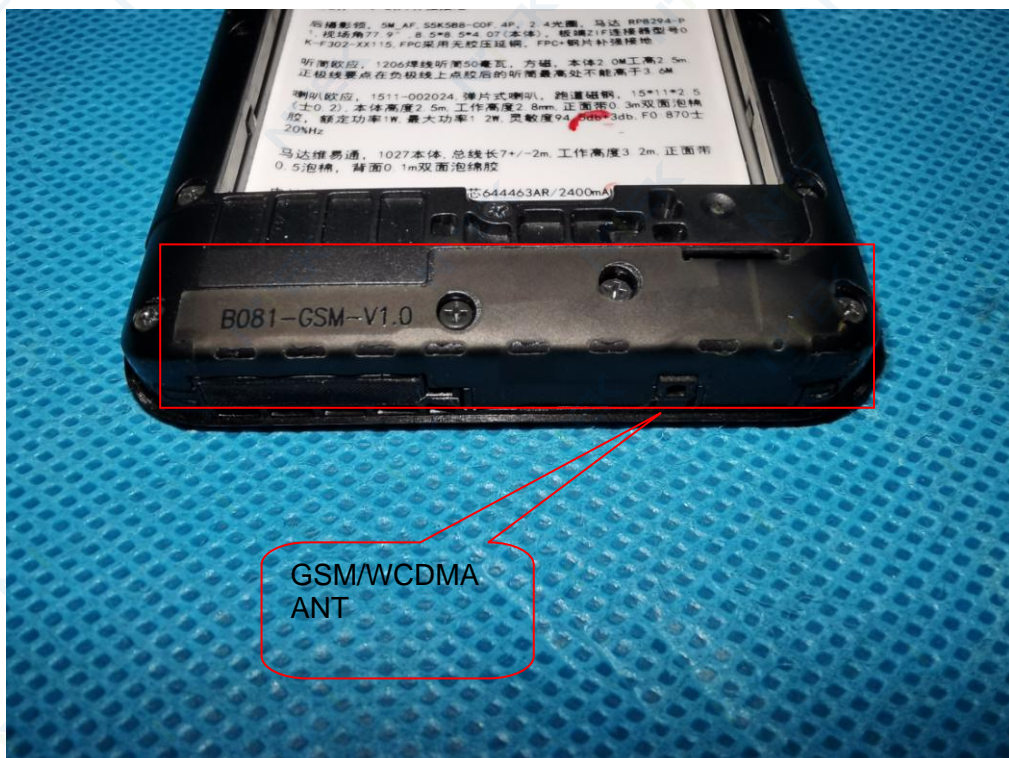




Photo 21

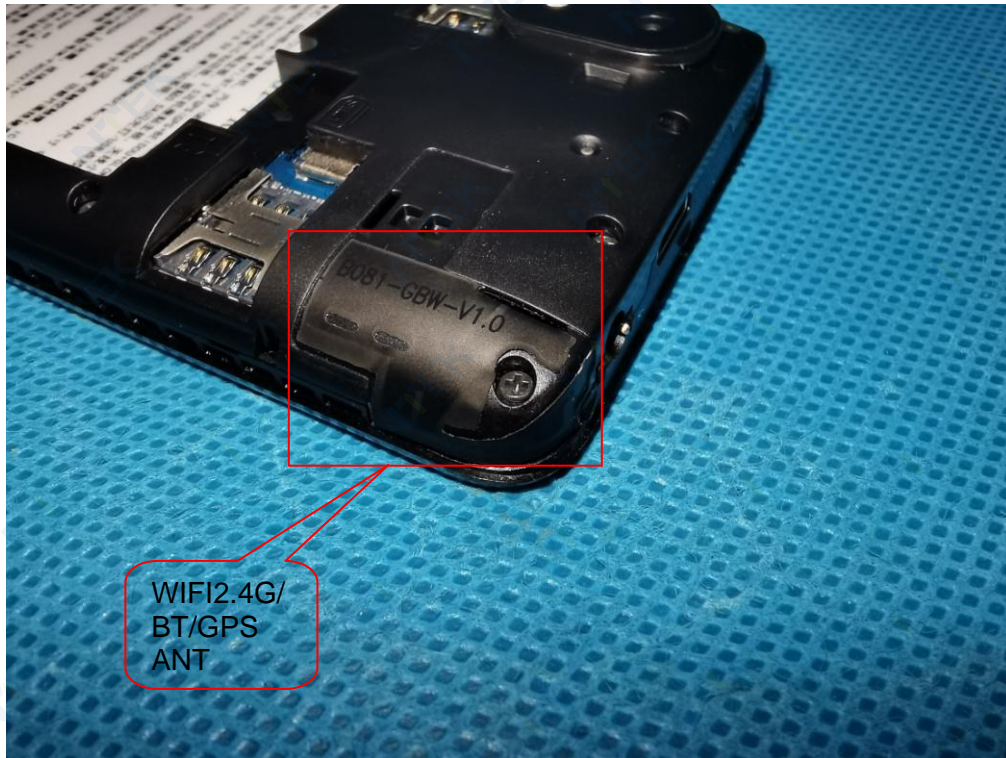


Photo 22





Photo 23



Photo 24

